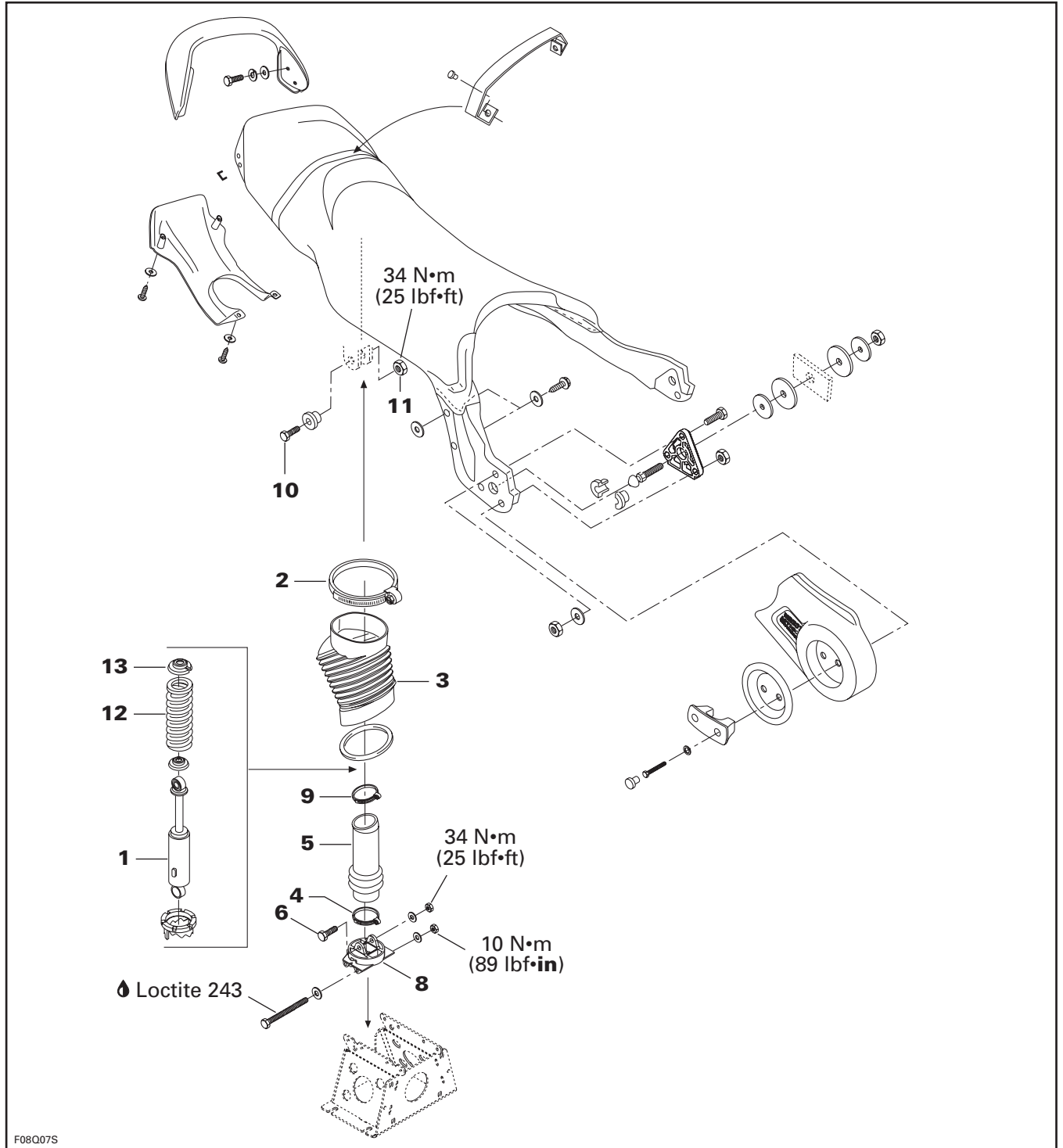


# DIRECT ACTION SUSPENSION

XP DI Models



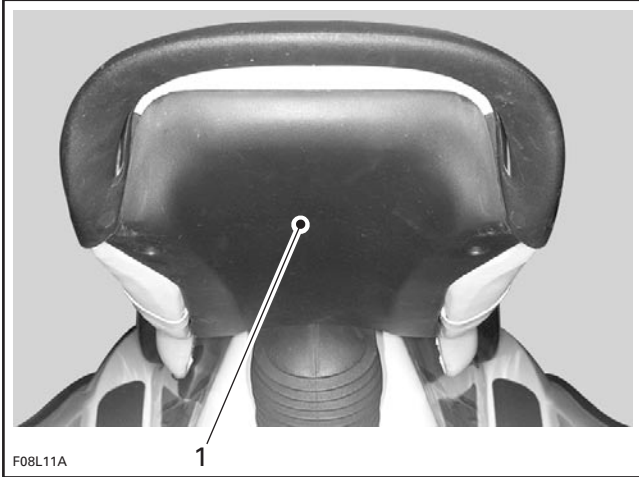
## Section 15 SUSPENSION

### Subsection 01 (DIRECT ACTION SUSPENSION)

## REMOVAL

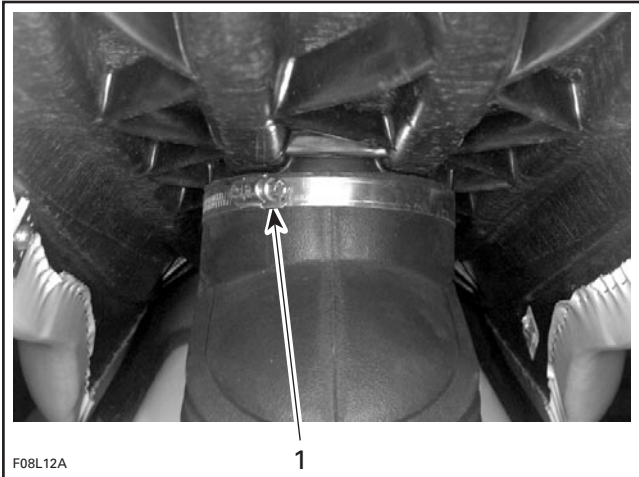
### Shock Absorber

Loosen 4 screws and remove bottom cover of seat.



1. Remove cover

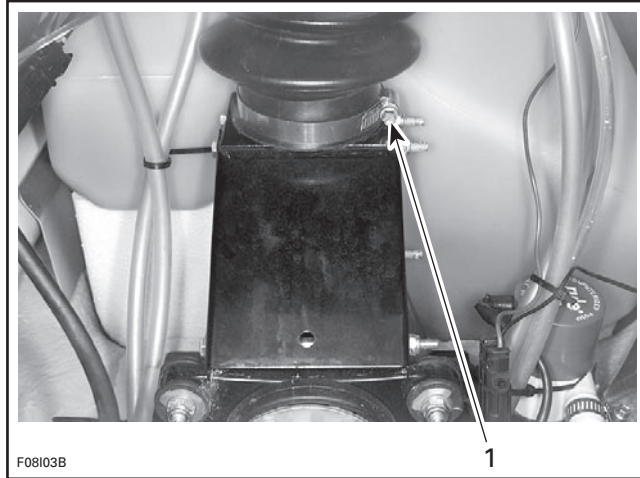
Loosen gear clamp no. 2 of outer boot no. 3, then pull outer boot downward.



1. Loosen gear clamp

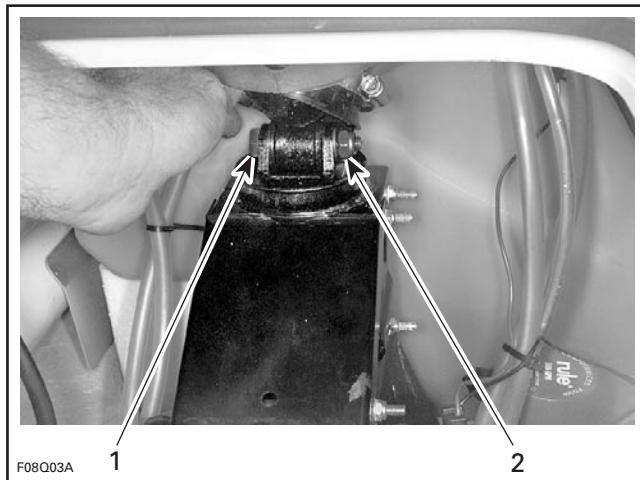
Remove rear access panel from body.

Loosen lower gear clamp no. 4, then push inner boot no. 5 upward.



1. Loosen gear clamp

Remove bolt no. 6 and lock nut no. 7 from shock absorber lower support no. 8.



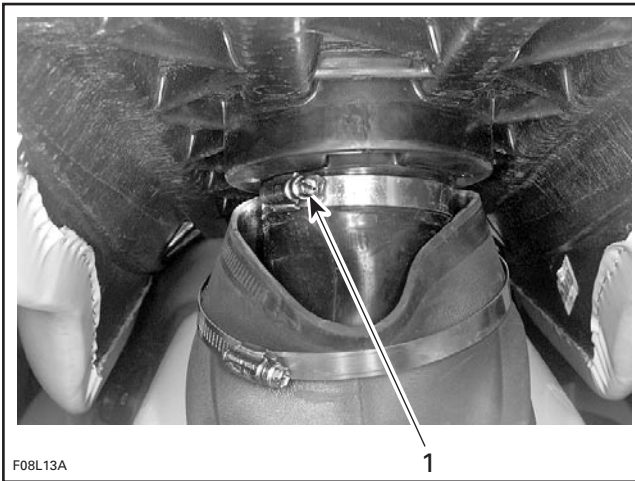
1. Bolt  
2. Lock nut

Tilt seat upward.

Loosen upper gear clamp no. 9 of inner boot no. 5.

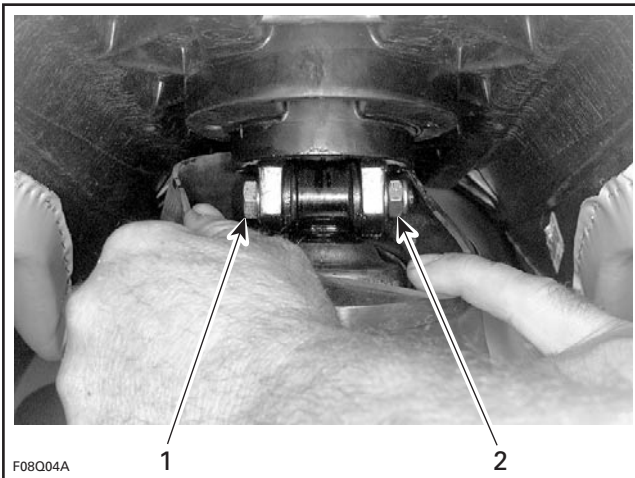
## Section 15 SUSPENSION

### Subsection 01 (DIRECT ACTION SUSPENSION)



1. Loosen gear clamp

Remove bolt no. 10 and lock nut no. 11 from shock absorber upper support.



1. Bolt  
2. Lock nut

Remove shock absorber/coil spring assembly.

#### Outer Boot

Pull outer boot to remove it from body.

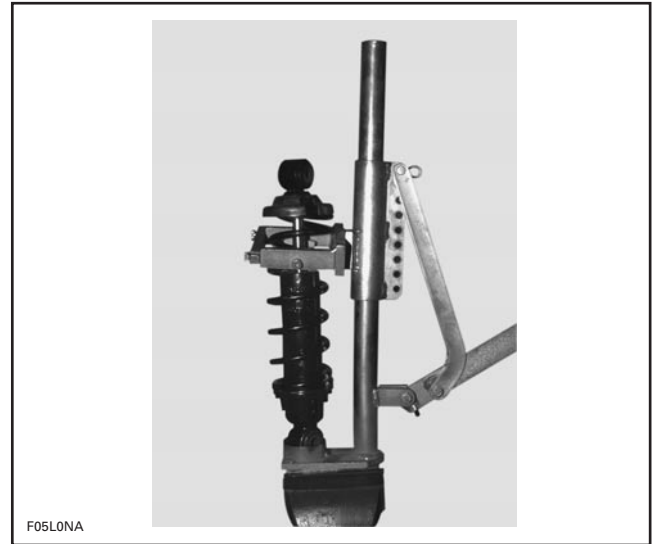
#### Coil Spring

Install spring compressor tool (P/N 529 027 100) in a vise.

#### WARNING

Do not attempt to dismantle a spring without using the proper tool.

Install shock absorber/coil spring assembly in spring compressor tool.



Compress spring and remove cup no. 13. Unload tool and remove spring from shock absorber.

## INSPECTION

### Boot

Inspect condition of boots. If there are any signs of tear, renew boot(s).

### Shock Absorber

Inspect shock absorber for wear. Extend and compress the piston several times over its entire stroke; it should move smoothly and with uniform resistance.

Pay attention to the following conditions that will denote a defective shock absorber:

- A skip or a hang back when reversing stroke at mid travel.
- Seizing or binding condition except at extreme end of either stroke.
- Oil leakage.
- A gurgling noise, after completing one full compression and extension stroke.

Renew if any defects are present.

---

**Section 15 SUSPENSION****Subsection 01 (DIRECT ACTION SUSPENSION)**

---

**ASSEMBLY**

Assembly is essentially the reverse of disassembly procedure. Refer to the main illustration at the beginning of this subsection for torque specifications and service products to be used.